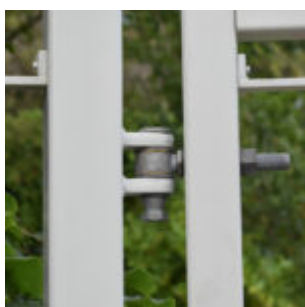
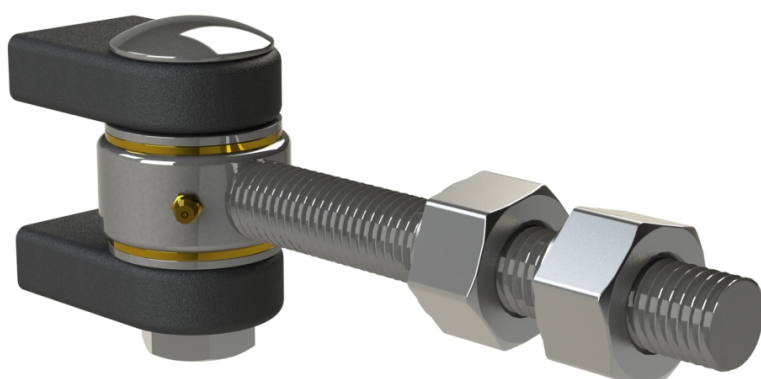


Superhinge

SKU: SH

Category: Gate hinges



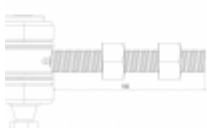
SH16



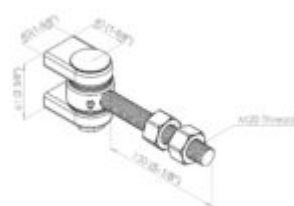
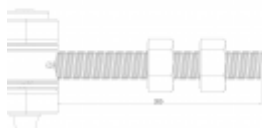
SH20



SH25



SH



DESCRIPTION

The new Gatemaster Superhinge is one of the most durable gate hinges in the range, tested to multiple openings on a large gate with no wear. It incorporates brass bearings within the hinge which ensure a smooth action and guarantees the product will last the test of time

- Strength tested – A pair of hinges is suitable for gates weighing up to 1,900lb
- Long lasting – Tested to 500,000 openings with no wear, that's 50 years at an average of 25 openings a day!
- Durable – Low friction, ideal for use with automated gates
- Adjustable – Adjustable bolt for precise gate fitting on site

[Read our case study](#) where the Superhinge was used on a bi-fold gate.

Product Code

SH16 – M16 thread (two SH16 work for gates up to 330lb)

SH20 – M20 thread (two SH20 work for gates up to 660lb)

SH25 – M24 thread (two SH25 work for gates up to 990lb)

SH30 – M30 thread (two SH30 work for gates up to 1,900lb)
