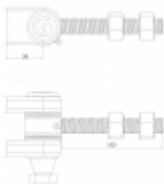
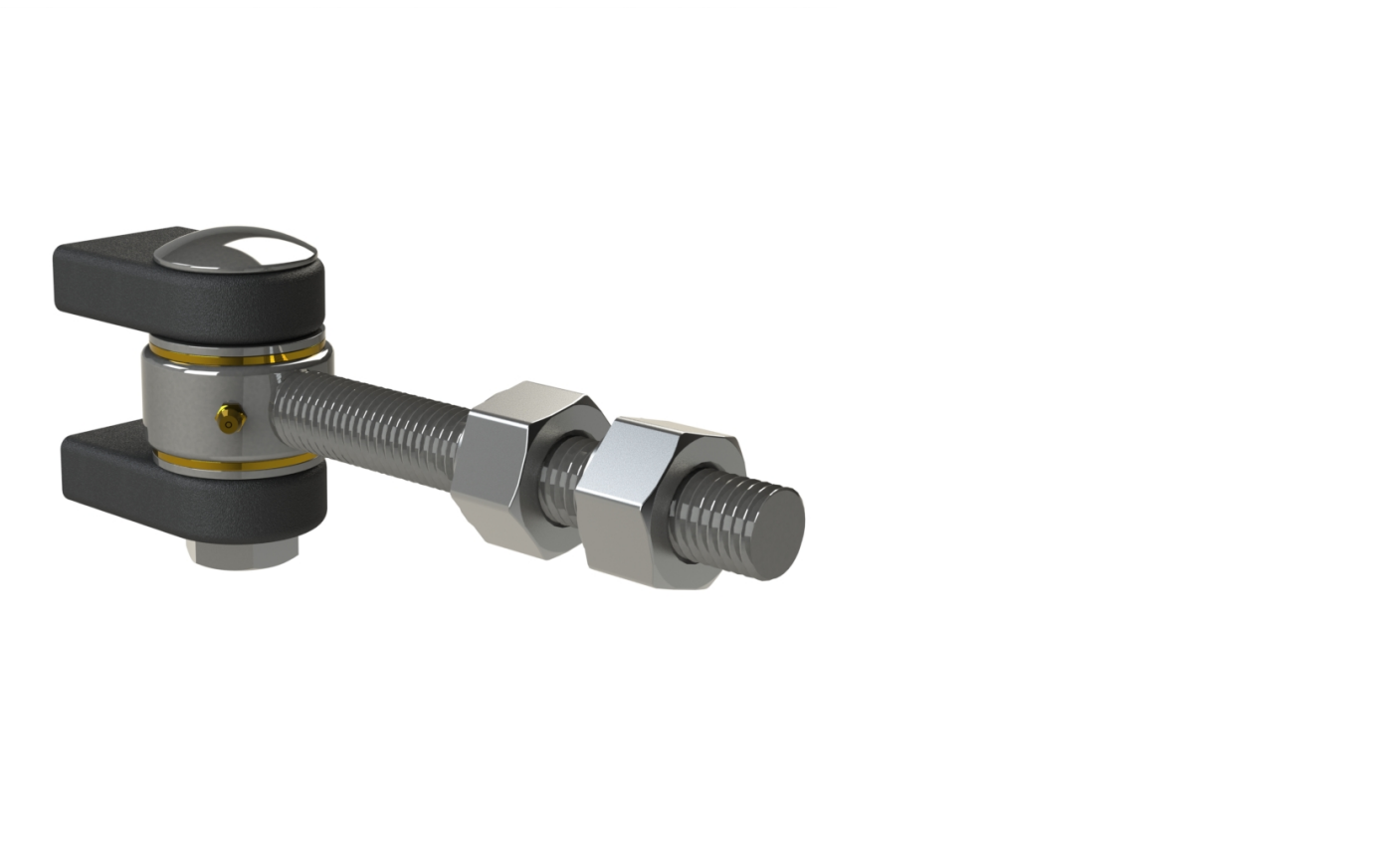
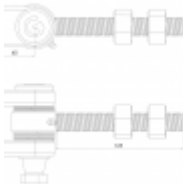


# Superhinge

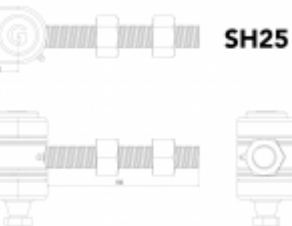
SKU: SH  
Category: Gate hinges



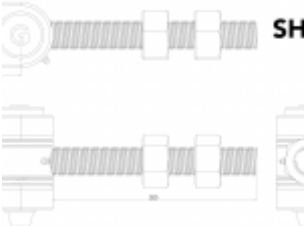
SH16



SH20



SH25



SH

## DESCRIPTION

---

The Gatemaster Superhinge is one of the most durable gate hinges in the range, tested to multiple openings on a large gate with no wear. It incorporates brass bearings within the hinge which ensure a smooth action and guarantees the product will last the test of time

- Strength tested – Suitable for all gates up to 900kg
- Long lasting – Tested to 500,000 openings with no wear, that's 50 years at an average of 25 openings a day!
- Durable – Low friction, ideal for use with automated gates
- Adjustable – Adjustable bolt for precise gate fitting on site

[Read our case study](#) where the Superhinge was used on a bi-fold gate.

## Product Code

SH16 – M16 thread – 150kg per pair of hinges

SH20 – M20 thread – 300kg per pair of hinges

SH25 – M24 thread – 450kg per pair of hinges

SH30 – M30 thread – 900kg per pair of hinges

---