

# PUSH FIT SECURITY COLLARS

- These push on security collars will prevent gates being lifted off.
- Once pushed onto the gate hook, protrusions inside the security collars grip the metal to prevent removal.
- Stainless steel cap gives a professional finish to the gate.

## PRODUCT DETAILS

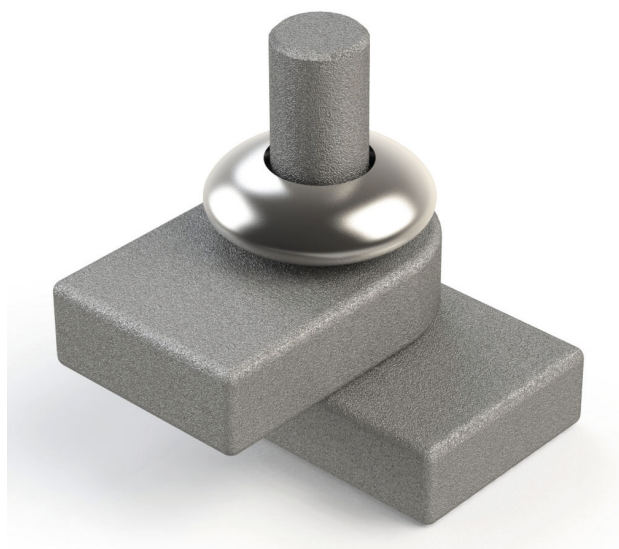
Product code:	Description:
SCP12	Security collar for 12mm (15/32") pin
SCP16	Security collar for 16mm (5/8") pin
SCP19	Security collar for 19mm (3/4") pin
SCP22	Security collar for 22mm (55/64") pin

Material: Stainless steel



## INSTALLATION

- Simply push onto the gate hook, above the gate eye to prevent the gate from being lifted.



VISIT [GATEMASTERLOCKS.COM](http://GATEMASTERLOCKS.COM) FOR MORE INFORMATION

