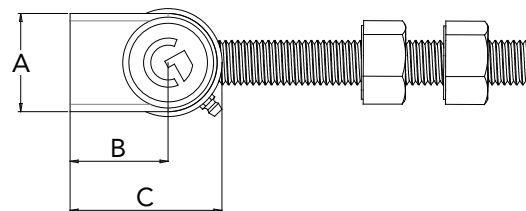


- G One pair of the M16 superhinges is suitable for gates up to 150kg (330lb) and the M30 version can take gates up to 900kg (1,900lb)
- G Tested to 500'000 openings with no wear - this is equivalent of 50 years at an average of 25 openings a day!
- G Low friction, which makes it ideal for use with automatic gates.

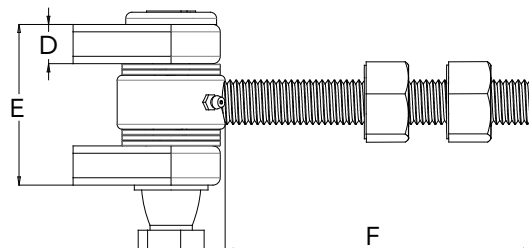
PRODUCT DETAILS

Product code:	Thread size:	Dimensions (mm):					
		A	B	C	D	E	F
SH16	M16	36mm	36mm	54mm	15mm	58mm	100mm
SH20	M20	40mm	40mm	62mm	16mm	66mm	125mm
SH25	M24	57mm	40mm	69mm	20mm	80mm	150mm
SH30	M30	64mm	45mm	77mm	24mm	94mm	200mm

Product code:	Thread size:	Dimensions (inches):					
		A	B	C	D	E	F
SH16	M16	1-13/32"	1-13/32"	2-1/8"	19/32"	2-9/32"	3-15/16"
SH20	M20	1-9/16"	1-9/16"	2-7/16"	5/8"	2-19/32"	4-59/64"
SH25	M24	2-1/4"	1-9/16"	2-11/16"	25/32"	3-1/8"	5-29/32"
SH30	M30	2-1/2"	1-49/64"	3-1/32"	15/16"	3-11/16"	7-7/8"

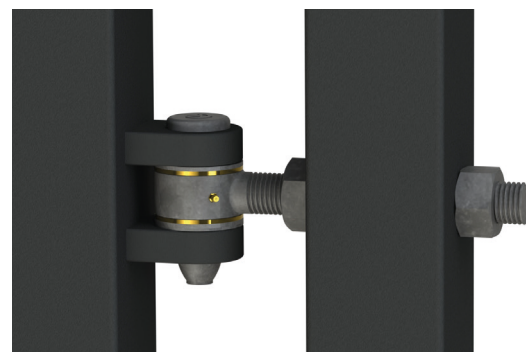


- Up to 150kg (330lb) gates - SH16 in pair (2 hinges)
- Up to 300kg (660lb) gates - SH20 in pair (2 hinges)
- Up to 450kg (990lb) gates - SH25 in pair (2 hinges)
- Up to 900kg (1,900lb) gates - SH30 in pair (2 hinges)



INSTALLATION

1. Disassemble the two self colour lugs from the hinge and weld in position to the gate post.
2. Drill a hole through the gate frame to suit the thread size.
3. Once the gate has been galvanised or painted, assemble the hinge and use the 2 nuts to adjust the position of the gate.
4. **MAINTENANCE** Lubricate during fitting and once every 6 months to ensure maximum product life.



 **GATEMASTER**

VISIT GATEMASTERLOCKS.COM FOR MORE INFORMATION

