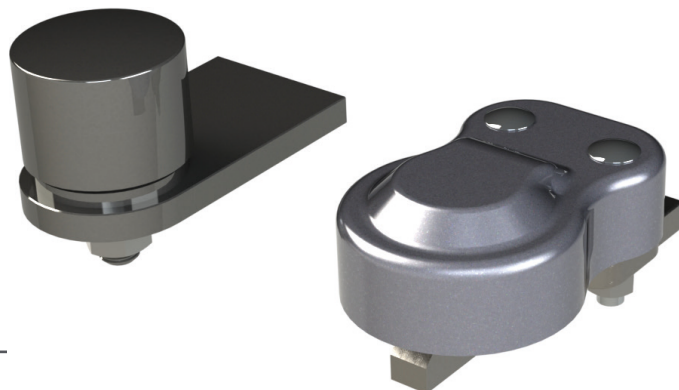


STOP HINGE WITH BOTTOM PIVOT



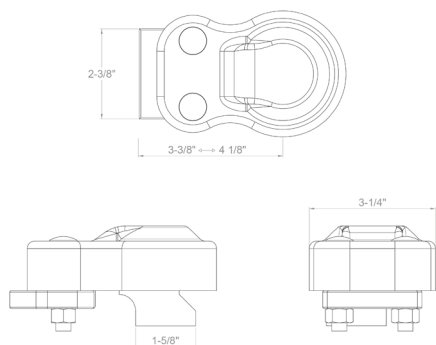
SPECIFICATION SHEET / **STH**

- Durable hinge kit designed for welding into gates up to 200kg (440lb).
- Incorporates an integral stop which means the gate does not open more than 100°.
- Top and bottom hinges are adjustable to ensure easy lining up.
- Easy to change to right or left opening.



PRODUCT DETAILS

Product code:	Description:
STH	Stop hinge with bottom pivot



INSTALLATION

1. Disassemble the slotted adjusting bracket from the hinge and weld onto the gate post near the top. Weld the spigot onto the top of the gate ensuring that the center of the pivot will be vertically in line with the bottom pivot (the small cutout in the bottom of the spigot marks the pivot centre point).
2. Once the gate is galvanised or painted the hinge can be located onto the spigot and bolted to the bracket with the fixings supplied. Slots are provided in the bracket to adjust the gate. Ensure that the unit is greased when fitted.
3. To fit the bottom hinge simply weld the bracket to the post and the pivot to the bottom of the gate, once galvanised this can be positioned in line with the top hinge.
4. To change the handing of the top hinge, remove the two bolts from the hinge and take out the first two U-shaped plates and the round plate. Remove the final plate and turn it up the other way before reassembling the unit and refit. This means the gate can now open 90° in the opposite direction.
5. **MAINTENANCE** Lubricate during fitting and once every 6 months to ensure maximum product life.

 **GATEMASTER**

VISIT GATEMASTERLOCKS.COM FOR MORE INFORMATION

