

APS HYDRAULIC GATE CLOSER

- G The APS closer and top hinge kit is specially designed for incorporating into gates for safe, reliable self closing.
- G Suitable for gates up to 330lbs, no power required.
- G Fully adjustable closing speed with closing and latching speed adjustments
- G The robust closer unit is fitted underneath the gate and also acts as a load-bearing lower hinge. Fitted in this position the closer is unobtrusive and highly vandal resistant.
- G The kit includes a top hinge assembly which is fully adjustable to enable the gate to be positioned correctly after installation

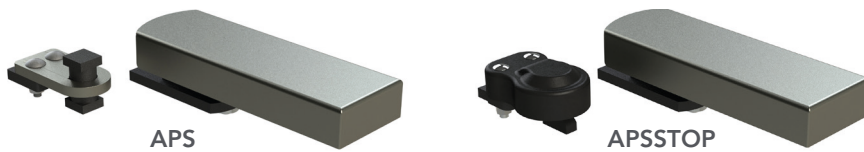


PRODUCT DETAILS

Product code:	Description:
APS APSTOP	Hydraulic gate closer Kit with special stop hinge to prevent gate to be opened more than 90 degrees, to avoid damaging the closer.

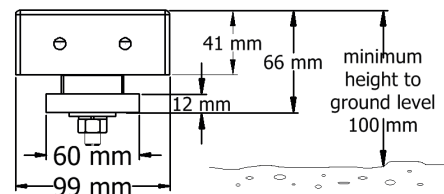
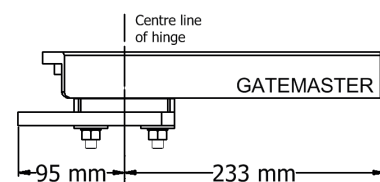
Gate weight: 330lbs max

Fully adjustable unit.



INSTALLATION

1. Remove the closer from the steel case and weld the case to the underside of the gate ensuring that when installed the closer pivot will be vertically in line with the top hinge spigot.
2. Remove the two self-colour post brackets and weld them to the gate post. Ensure that there will be sufficient clearance between the closer and the finished ground surface to enable the speed control valves to be adjusted using the key supplied. Incorporate the top hinge spigot into the gate frame near the top.
3. Once the gate is painted or galvanised the components can be assembled onto it and the gate lowered onto and secured to the lower bracket. The top hinge can then be assembled and adjusted to align the gate correctly. If using the standard APS closer, please ensure that a separate gate stop is fitted to prevent the gate being opened more than 100°.
4. **MAINTENANCE** The top hinge should be kept lubricated with a suitable grease. The closer and bottom hinge require no maintenance.



VISIT GATEMASTERLOCKS.COM FOR MORE INFORMATION



APS HYDRAULIC GATE CLOSER



DETAILED SPEED CONTROL INSTRUCTIONS

The APS gate closer motor is factory set to close the gate in 5 – 7 seconds. There are 2 speed control valves. The one furthest from the pivot is for controlling the last 15 degrees of closing speed and is called the 'Latching speed control valve'. The other valve is for controlling the speed of the first 75 degrees of closing.

Closing speed adjustment

1. Using the key provided, turn both screws in until they stop turning. Be careful not to over tighten them once they have reached the limit of travel. Both valves are now closed and the gate will now not close or open
2. Now undo the valve nearest the pivot 1 – 2 turns. This should result in the gate moving through the first 75 degrees of closing in about 6 seconds.
3. Next release the latching speed control valve 1 – 2 turns and the last 15 degrees of closing will take about 4 seconds.

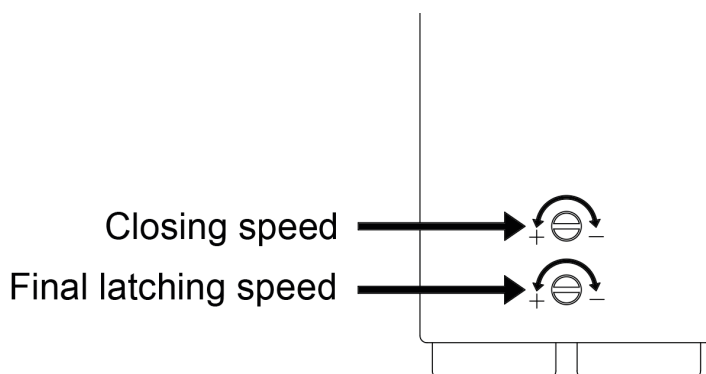
Note: A ¼ turn can make a large difference to the speed of the gate.

Do not turn screws more than 3 turns from the closed position, if in doubt close off valves and start again.

If the screw is turned passed this point, oil loss will result. This will cause the mechanism to fail, thus invalidating all warranties.

Gate not closing fully

If the closer comes to its rest point before the gate is fully closed, release 2 x M10 nuts on bracket below closer, shut the gate and retighten the M10 nuts.



To adjust, turn both screws clockwise until they stop. This will mean the gate will be locked in position. Then undo until they are the correct speed ensuring they do not turn more than 3 full turns from the stopped position



VISIT GATEMASTERLOCKS.COM FOR MORE INFORMATION

