

BETTER ENGINEERED SOLUTIONS FOR GATE SAFETY AND SECURITY

# THE APS RANGE

## HYDRAULIC GATE CLOSER

---

Engineered for reliability and safety, Gatemaster's hydraulic gate closers are the ideal solution for projects where security and peace of mind are essential.



[WWW.GATEMASTERLOCKS.COM](http://WWW.GATEMASTERLOCKS.COM)

 **GATEMASTER**

## Safe & Reliable Self-Closing

The Gatemaster APS Hydraulic Gate Closer is the ultimate solution for secure, self-closing gates in safety-critical spaces. Designed with precision engineering, this innovative closer offers a robust, vandal-resistant design that ensures your gate closes smoothly and securely every time without the need for power or batteries.



	APS	APSSTOP	APSW	APS4	APS4TOP
Fixing type	Weld-on	Weld-on	Screw-fixed	Weld-on	Weld-on
Max. gate weight	150kg	150kg	150kg	170kg	170kg
Max. gate width	1.5m	1.5m	1.5m	1.5m	1.5m
90 ° restricted opening	-	✓	✓	-	✓
Dual-phase closing	✓	✓	✓	✓	✓
Adjustable dual closing speeds	✓	✓	✓	✓	✓
ROSPA compliant	✓	✓	✓	✓	✓
Vandal resistant design	✓	✓	✓	✓	✓
Power and battery free	✓	✓	✓	✓	✓

## 1 Enhanced Safety

The APS gate closer ensures gates are never accidentally left open, reducing risks in areas where security or safety is paramount. Its fully adjustable dual closing and latching speed meets ROSPA compliance, providing peace of mind for high-traffic areas.

## 3 Unobtrusive & Durable Design

Installed at the bottom of the gate, the APS closer is discreet and designed for maximum durability. Its corrosion-resistant casing and load-bearing capabilities make it ideal for outdoor and high-use environments. Positioned beneath the gate, it is highly resistant to vandalism, ensuring long-term reliability. Weld-on and bolt-on versions available, the weld on is most commonly used and can be installed in many ways, ie. be under the bottom rail, within the bottom rail or gate adapted to suit.

## 5 Effortless & Low-Maintenance

The APS closer is a self-contained hydraulic unit that requires no external power or battery pack. Therefore, it provides seamless operation in any environment while minimising maintenance requirements.

## 2 Injury Prevention

With safe, controlled dual-phase closing speeds, the APS closer prevents the gate slamming, ensuring safety for users. With fully adjustable closing and latching speeds, the gate can be adapted depending on the use case.

## 4 Adaptable for Large Gates

Designed for gates up to 170kg, the APS range includes a fully adjustable top hinge assembly, enabling precise gate alignment during installation.





## RoSPA Compliant: Meeting Stringent Safety Standards

The Royal Society for the Prevention of Accidents (RoSPA) is an organisation that works to reduce accidental injuries. They outline a number of points for gate safety in public areas.

Our APS Hydraulic Gate Closers meet the stringent RoSPA recommendations.

### **Supports Gates Wider Than the Recommended Rospa Minimum Gate Width**

“Gates and grids should be a minimum of 1m open width to allow passage of wheelchairs and any grid should be positioned so that the bars do not hinder the passage of wheelchairs or pushchairs etc.”

### **Adjustable Dual-Phase Self-Closing**

“The gate should ideally not close quicker than 5 seconds to make wheelchair access easier and also to prevent it striking the back of a child walking through”

### **Keeps the Gate Closed, as Recommended by RoSPA**

“The use of self-closing mechanism is strongly recommended to maintain the gate in a closed position.”

### **The Gap Set in the Hinge from Post to Gate Reduces Finger Traps**

“It is important that there are no finger or hand traps and shear points. This means that there should be a minimum gap of 12mm between the gate and the posts etc, both sides of the gate. This minimum gap should be maintained throughout the full range of movement of the gate throughout its full arc.”

### **Sufficient Ground Clearance Maintained to Reduce Foot Injuries**

“A clearance of between 60mm and 110mm should be maintained beneath the gate to reduce foot injuries. Ground should be level to prevent this gap closing through the range of movement.”



The APS hydraulic gate closer range is perfect for any situation where keeping the gate closed is essential for safety and security. Our gate closers have been installed for many use cases including:

## Playgrounds and Schools

Keeping children safe by ensuring gates close securely after each use.

## Bike Storage

Ensuring controlled access for increased security.

## Dog Parks

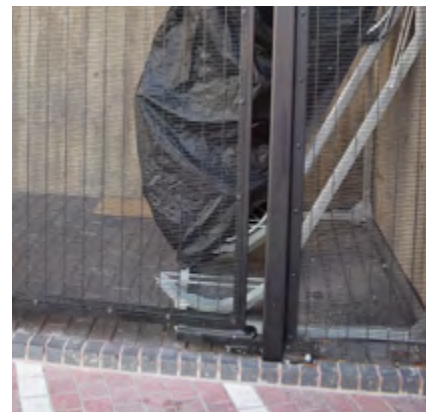
Keeping pets contained safely.

## Crossing Gates

Maintaining safety near roads and railways.

## Residential Complexes

Enhancing security for private communities.





## Enhancing Gate Security & Style

Heartlands Metal Craft, a fabricator and installer of bespoke gates, sought a reliable, robust, and aesthetically pleasing solution to meet the increasing demand for self-closing gates. They wanted a product that could seamlessly integrate into various gate designs, offer precise closing control, and withstand diverse weather conditions.

Heartlands Gates partnered with Gatemaster to incorporate the APS Hydraulic Gate Closer into their product line, delivering enhanced functionality and durability to their customers.

### The Challenges

1. **Safety and Security:** Customers wanted gates that closed consistently and securely without slamming, reducing risks to pedestrians and vehicles.
2. **Adaptability:** The gate closers needed to suit various gate types, from heavy-duty commercial gates to lightweight residential designs.
3. **Appearance:** A high-quality finish that is aesthetically pleasing.

Additionally, Heartlands needed a solution capable of handling the unpredictable UK weather conditions all year round, and to be available within relatively short delivery times.



### The Gatemaster Solution

Heartlands Metal Craft selected the Gatemaster APS Hydraulic Gate Closer for its innovative features and adaptability.

#### Key Features of the APS Hydraulic Gate Closer:

- The robust closing unit fits underneath the gate making it highly vandal resistant and structurally unobtrusive.
- Equipped with multiple speed controls to adjust the opening speed and then the last 15° to adapt to heavy or lightweight gates.
- The hydraulic closer requires no power and includes detailed instructions and checklists ensuring installation is as simple as possible.
- A top hinge assembly which is fully adjustable to enable the gate to be positioned correctly after installation.



## Ensuring Student Safety

Safety around gates is a critical concern, particularly in environments with children, where risks of trapping and crushing can be severe. For a school in Pulborough, West Sussex, a new steel gate for their entrance needed to meet stringent requirements:

- **Security:** Prevent unauthorised access to the school grounds.
- **Auto-Closing:** Ensure the gate always returned to a locked position.
- **Child Safety:** Minimize risks from finger traps and crushing points.

### The Challenges

The school collaborated with a trusted gate manufacturer to design a solution that addressed these safety and security concerns. After careful consideration, they chose Gatemaster hardware for both the locking and closing mechanisms.



### The Gatemaster Solution

To meet the school's specific requirements, Gatemaster supplied the APS Hydraulic Gate Closer. With slow closing and two adjustable speeds, the APS ensures the gate closes gently, preventing it from slamming and reducing the risk of injury to children. The closer was also selected as the design eliminates reducing gaps preventing pinching or crushing injuries. Installed beneath the gate, the mechanism also reduces the likelihood of damage.

The APS hydraulic gate closer delivered a safe, secure, and low-maintenance solution. The gate was completed with Gatemaster's code gate lock, a versatile option ideal for multiple users, allowing access via a secure code provided to authorised personnel only.

"The closer mechanism worked perfectly for the gate and didn't require any adjustment or maintenance despite being installed for over 10 years. The configuration meant the gate always remained locked, which ensured students were kept safe and couldn't get out to the road."

– School Governor

**Get in touch to learn more about the APS range.**

Our team is here to assist! Contact us today for expert advice and quality solutions tailored to your needs.



+44 (0)1243 558580



[sales@gatemasterlocks.com](mailto:sales@gatemasterlocks.com)



[www.gatemasterlocks.com](http://www.gatemasterlocks.com)



Unit 3 & 5 Dickinson Place,  
Durban Road Industrial Estate,  
Bognor Regis,  
West Sussex,  
PO22 9QU,  
United Kingdom

**Phone:** +44 (0)1243 558580

**Email:** [sales@gatemasterlocks.com](mailto:sales@gatemasterlocks.com)

**www.gatemasterlocks.com**



FS 764131